



# FC-280PC/SC

**MABUCHI MOTOR**  
Carbon-brush motors

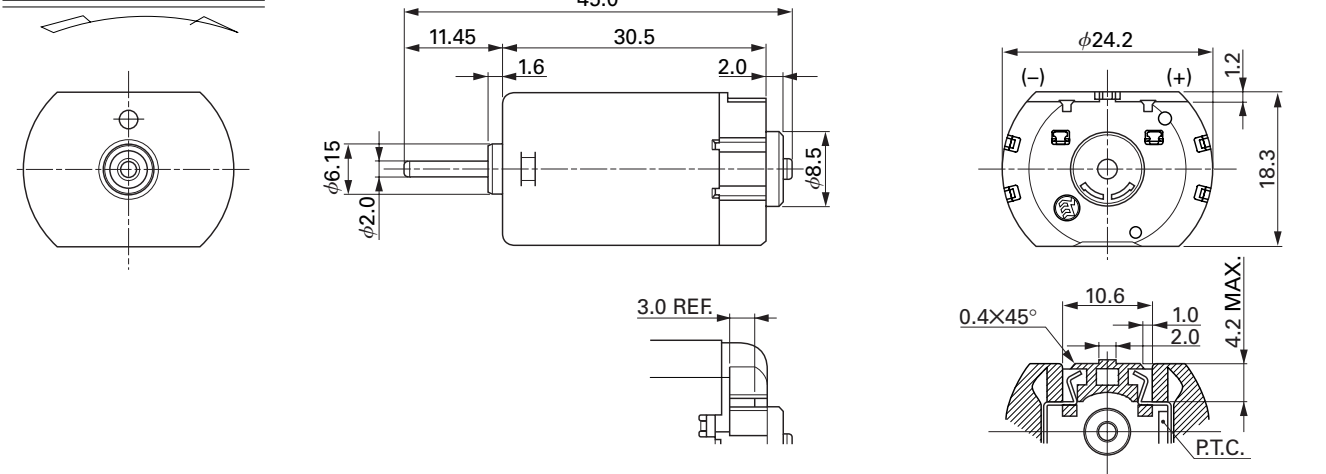
OUTPUT : 0.1W~4.0W (APPROX)

WEIGHT : 38g (APPROX)

Typical Applications Automotive Products : Retractable Rearview Mirror / Door Lock Actuator / Steering Lock

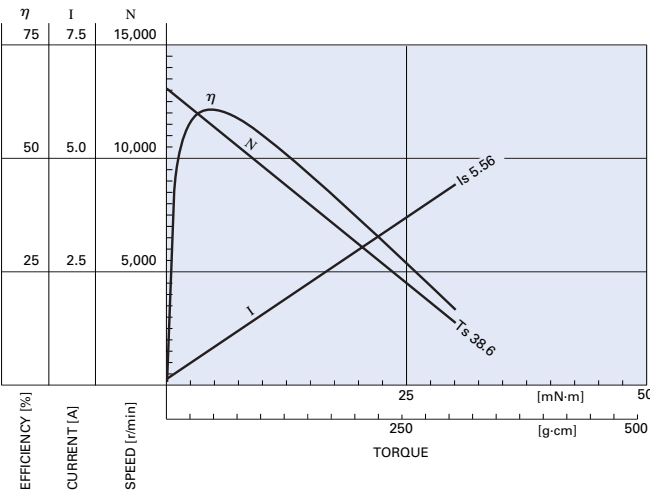
MODEL	VOLTAGE		NO LOAD		AT MAXIMUM EFFICIENCY					STALL		
	OPERATING RANGE	NOMINAL	SPEED	CURRENT	SPEED	CURRENT	TORQUE		OUTPUT	TORQUE		CURRENT
			r/min	A	r/min	A	mN-m	g-cm	W	mN-m	g-cm	A
FC-280PC-22125	8~15	12V CONSTANT	13100	0.11	11480	0.78	4.76	48.5	5.71	38.6	393	5.56
FC-280SC-20150	8~15	12V CONSTANT	11800	0.081	10310	0.56	4.14	42.2	4.47	32.9	335	3.90
FC-280SC-18180	8~15	12V CONSTANT	9700	0.16	7880	0.69	5.33	54.3	4.39	28.4	290	3.00
FC-280SC-16220	9~14	12V CONSTANT	7900	0.055	6780	0.33	3.27	33.3	2.32	23.0	234	2.00

## DIRECTION OF ROTATION



UNIT: MILLIMETERS

## FC-280PC-22125 12.0V



## FC-280SC-20150 12.0V

